

LabMan™ SE

by

Chemical Solutions

© Copyrighted 2001 – 2007 by Chemical Solutions. All rights reserved worldwide. Copying without the permission of Chemical Solutions or the Kushner Electroplating is expressly prohibited except for the purpose of making one working copy for you own personal use.

Laboratory Management and Process Control Software

INTRODUCTION

Welcome to **LabMan SE**, an easy to use computer program that allows you to accurately perform analytical calculations needed for process control and maintenance. Using this software you can store all analytical results, additions and make-ups for up to 100 tanks. **LabMan SE** will adjust chemical inventory after additions are made and a usage report can be generated to determine inventory levels and usage cost.

The program is written for the Windows™ 95/98/ME/2000/XP environment. Help with each step is available within the program.

PROGRAM INSTALLATION

After downloading the installation files make note of the location where the files have been stored and follow the procedure given below.

Step 1 – Click Start on the taskbar.

Step 2 – From the Start menu, choose Run.

Step 3 – In the Run window, click on the Browse button. See Figure 1.

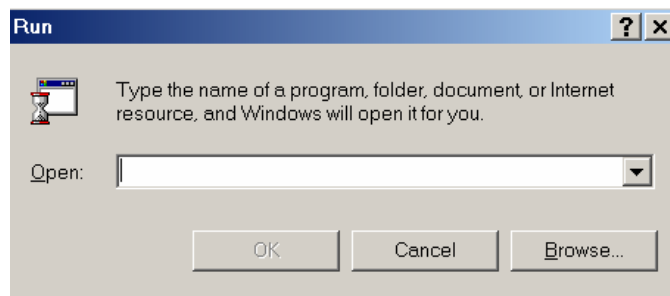


Figure 1.

Step 5 – Using the Browse function, navigate to the location where the files were downloaded. A window will appear with a listing of the LabMan install program. See Figure 2.

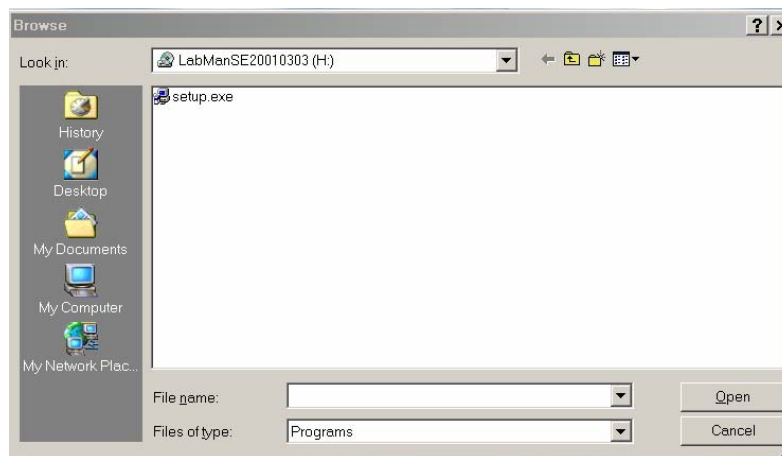


Figure 2.

Step 6 – Click on the file name Setup.exe. Click on the Open button. A window will appear. See Figure 3.

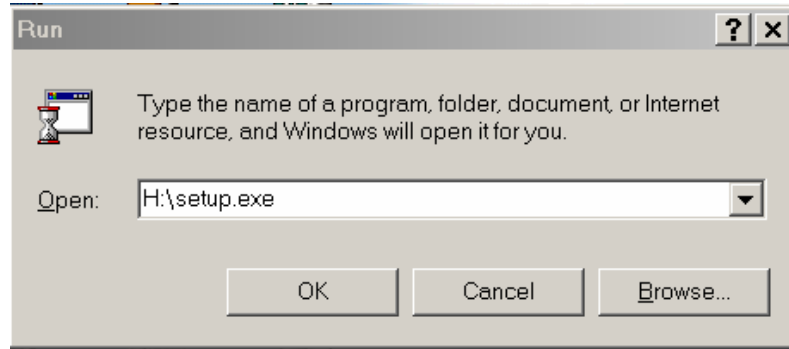


Figure 3.

Step 7 – Click OK.

LabMan SE will automatically install on your computer. Follow the directions on the screen. When the installation is complete, remove the CD from the CD-ROM drive.

STARTING LABMAN SE

Click on the LabMan icon. The first screen to appear requests a password. If you desire to gain access to the program, **you must use a password to enter the program**. The password you must use is "password". **Passwords are case sensitive**. This gives you access to the entire program and allows you to make data entry, changes and deletions. The master password can be changed once you have entered the program. Security level 4 allows access to all data and allows editing of data. Security level 1 allows access to data but does not allow changing of data.

The password system allows you to limit access to critical portions of the program.

HELP MENU AND USER'S MANUAL

The first screen that appears after the password screen shows a number of different options. One option labeled HELP MENU will allow you to view the on-line, USER'S MANUAL, which gives you detailed information about the various portions of the program. This information can be printed to give you a hard copy. **A copy of the USER'S MANUAL is supplied with this program**. You can print out additional copies of this manual by accessing it from the HELP MENU.

The USER'S MANUAL gives you detailed information on setting up LabMan for your metal finishing operation.

THE QUESTION MARK



The Question Mark appears on every screen within **LabMan SE**. By clicking on the Question Mark you are able to obtain help with that particular screen. The help screens can be printed out if desired.

THE STOP SIGN



On some of the screens that you see in **LabMan SE**, a Stop Sign appears. By clicking on this stop sign you are able to leave the program immediately without damaging any of the data stored in the program.

TECHNICAL SUPPORT

Technical support is available from the Kushner Electroplating School. There is no charge for this service for the first 90 days after purchase of the program. You may obtain help by telephone, FAX or E-Mail.

Telephone: (408) 749-8652, Monday - Friday, 8:00 AM - 5:00 PM, Pacific Time

Fax: (408) 749-0176

E-Mail: platingman@platingschool.com

LICENSE AGREEMENT

Your use of the program indicates your acceptance of the following terms and conditions.

1. You have a non-exclusive right to use the enclosed program known as **LabMan SE** although Chemical Solutions retains title to it. This program may be used on any one computer that you own.
2. You may make one copy of the programs for use as a "backup." You may not make copies of these programs for distribution to others.
3. By completing and returning the enclosed registration card, you will become a registered user of **LabMan SE**. You will be notified of upgrades and improvements in the software when they become available.
4. The programs and their related documentation are copyrighted. You may not modify nor translate the programs nor documentation in any way without the prior written consent of Chemical Solutions or the Kushner Electroplating School.

WARRANTY AND DISCLAIMER

Kushner Electroplating School warrants to Registered Users that the enclosed program will perform as indicated in the accompanying documentation. In the event that the program does not so perform, and provided you are a registered user, Kushner Electroplating School will have the option of either providing corrections to the program or of accepting return of all materials for a full refund of the price paid. You have no other remedy for breach of this warranty.

Kushner Electroplating School warrants the CD ROM disk on which the program is recorded to be free of defects for ninety days from the date of shipment. Kushner Electroplating School will replace any defective disk that is returned within this ninety-day period.

Chemical Solutions, The Kushner Electroplating School, the Scott-Joshua Corporation, its officers, directors and staff, accept no responsibility for the use of the methods, materials or calculations appearing or described in this computer program. The information contained in this program is thought to be correct but the use of the methods, materials and calculations is solely at the risk of the user.

Visit us on the web:

LabMan and LabMan SE are trademarks of Chemical Solutions
Windows and Windows 95/98/ME/2000/XP are registered trademarks of Microsoft, Inc.

Version SE, 01/01/07